



eyeleve™  
by **Bruder**®

CONTACT LENS  
COMPRESS

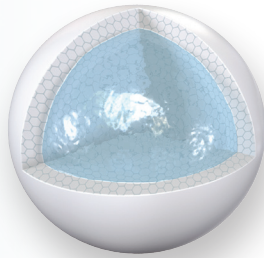




CLINICALLY PROVEN  
TECHNOLOGY THAT  
DELIVERS RESULTS.  
AND POSTPONES  
DROPOUT.

eyeleve™  
by Bruder®





Patented MediBeads® Technology  
DELIVERS CLEAN BACTERIA-FREE  
MOIST HEAT

NO COVERS OR PADS NEEDED

NATURALLY ANTI-BACTERIAL



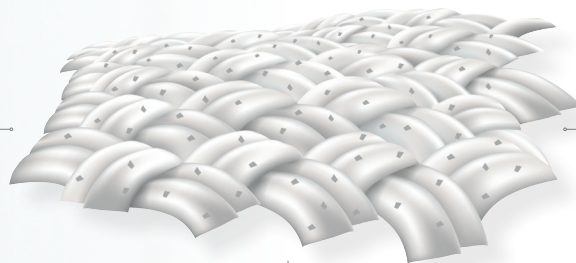
WASHABLE & REUSABLE

SOFT ADJUSTABLE STRAPS

NON-TOXIC & LATEX FREE

SELF-HYDRATING  
NO NEED TO ADD WATER

EyeOnic™ Anti-microbial Fabric  
HELPS REDUCE THE RISK OF INFECTION



100X MAGNIFICATION

## COMFORT

Eyeleve™ Contact Lens Compress provides consistent, therapeutic moist heat that promotes natural hydration and alleviates symptoms of meibomian gland dysfunction (MGD) and contact lens-related dry eye (CLDE).

By helping to stabilize the ocular surface, Eyeleve™ reduces dryness and extends comfortable wear time of contacts. The patented ergonomic pod design includes an adjustable nose piece designed to fit all facial types, while the comfort stitch helps take pressure off the eyes.

## CLEANLINESS

Eyeleve™ Contact Lens Compress combats bacteria, reducing the risk of infection through a combination of two patented technologies.

MediBeads® deliver superior clean, bacteria-free, moist heat, while the EyeOnic™ fabric further repels bacteria.

Washing will not decrease the anti-microbial effectiveness of Eyeleve™.

## CONVENIENCE

Eyeleve™ is fast-acting and easy-to-use – just microwave for 20 seconds and it is ready to apply for an 8 – 10 minute treatment. There is no need to add water.

Patients can apply the compress any time to improve eye comfort and focus.

## CONFIDENCE

Eyeleve™ combines patented technologies designed to meet the specific needs of contact lens patients. With over 30 years of experience, Bruder provides products clinically tested to improve patient outcomes.

You can feel confident in recommending Eyeleve™ to your contact lens patients to increase their comfortable wear time.

## CLINICALLY TESTED

The Bruder Moist Heat Eye Compress underwent a clinical study at the School of Optometry at the University of Alabama in Birmingham\*. The study found that subjects using the Bruder Compress daily had significantly improved meibomian gland function, and experienced steeper declines in their overall Eye Discomfort Assessment scores. They ultimately increased comfortable wear time of their contact lenses by up to 3 hours.

## COMBATS INFECTION

Research has shown that the eyes of contact lens wearers have three times the usual levels of certain bacteria than non-wearers.\*\* Eyeleve™ reduces the risk of corneal infection and helps keep eyelids clean through the use of MediBeads® and anti-microbial EyeOnic™ fabric.

## POSTPONES DROPOUT

A recent study in Contact Lens & Anterior Eye\*\*\* found that end-of-day discomfort is a primary reason for contact lens dropout. Eyeleve™ is an effective treatment for improving comfortable wear time and will help postpone dropout.

Want to improve comfort and reduce dropout? Recommend the Eyeleve™ Contact Lens Compress to your patients early in their use of contact lenses. Eyeleve™ comes with a reusable storage bag and is conveniently sold in a 10 case self-feeding display — perfect for use in your contact lens dispensary.

eye/eve™  
by Bruder®

EXTENDS COMFORTABLE WEAR  
TIME OF CONTACT LENSES WHILE  
REDUCING THE RISK OF INFECTION

From the Bruder family of health and wellness products comes a breakthrough in contact lens comfort: Eyeleve™.

Specially designed with patented MediBeads® technology and EyeOnic™ anti-microbial fabric, the Eyeleve™ Contact Lens Compress provides an effective moist heat treatment to promote the eyes' natural hydration.



# eyeleve™

by **Bruder**®



item #54112

Recommend Eyeleve™ and make it part of your patients' contact lens routine.

Learn more at [www.eyeleve.com](http://www.eyeleve.com)

© Bruder Healthcare Company, Alpharetta, GA 30004  
1-888-827-8337 | [www.eyeleve.com](http://www.eyeleve.com)  
Patented Technology.

- \* 2018 UAB Study: The Effect of the Bruder Eye Hydrating Compress on Contact Lens Discomfort in Contact Lens Wearers
- \*\* 2015 New York University Langone Medical Center
- \*\*\* 2017 Contact Lens & Anterior Eye. Factors in the Success of New Contact Lens Wearers